


Supporti antivibranti SAV-1 / SAV-2 – foglio applicativo

Il presente foglio applicativo ha lo scopo di illustrare il corretto utilizzo dei supporti antivibranti utilizzati su barriere sottoposte a forti vibrazioni. Il set di supporti antivibranti SAV-1 / SAV-2, deve essere montato dal cliente sulle barriere della serie **JANUS / JANUS TRX / SAFEGATE / SAFEGATE TRX**.

La tabella seguente indica il set di supporti antivibranti da utilizzare a seconda del modello di barriera in uso.

ALTEZZA BARRIERA	CODICE SUPPORTO	MODELLO	QUANTITÀ SUPPORTI
150...1050mm	1200084	SAV-1 (2 antivibranti per staffa)	4
1200...1800mm	1200085	SAV-2 (2 antivibranti per staffa)	6

Tabella 1

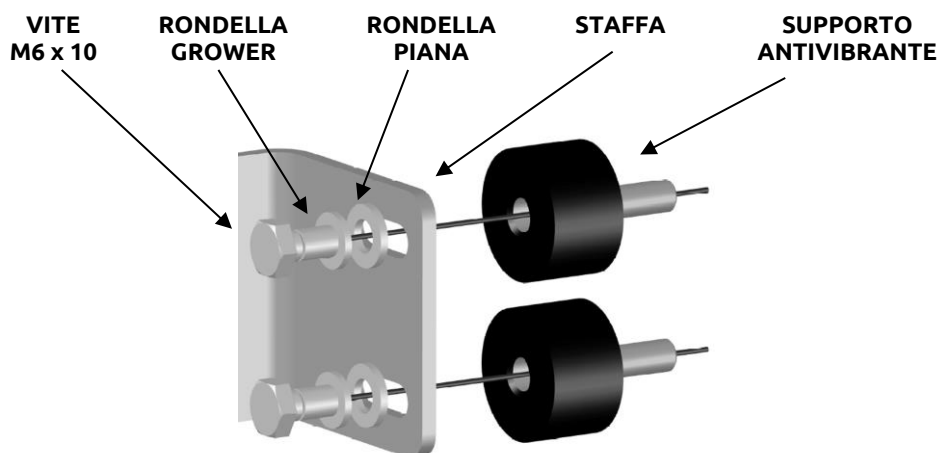


Figura 1

MONTAGGIO

- Assicurare la staffa alla macchina pericolosa, grazie al supporto antivibrante, mediante rondella piana, rondella grower e vite M6 x 10 (**step 1, fig. 2**).
- Fissare quindi la barriera sulla staffa con: inserto, rondella piana, rondella grower e dado M6 (**step 1, fig. 2**).
- Serrare il dado M6 (**step 1, fig. 2**).
- In caso di installazione di barriere di lunghezza superiore a 1050mm, fissare (se possibile) 2 supporti sul retro e il terzo su di un lato (**step 2, fig. 2**).

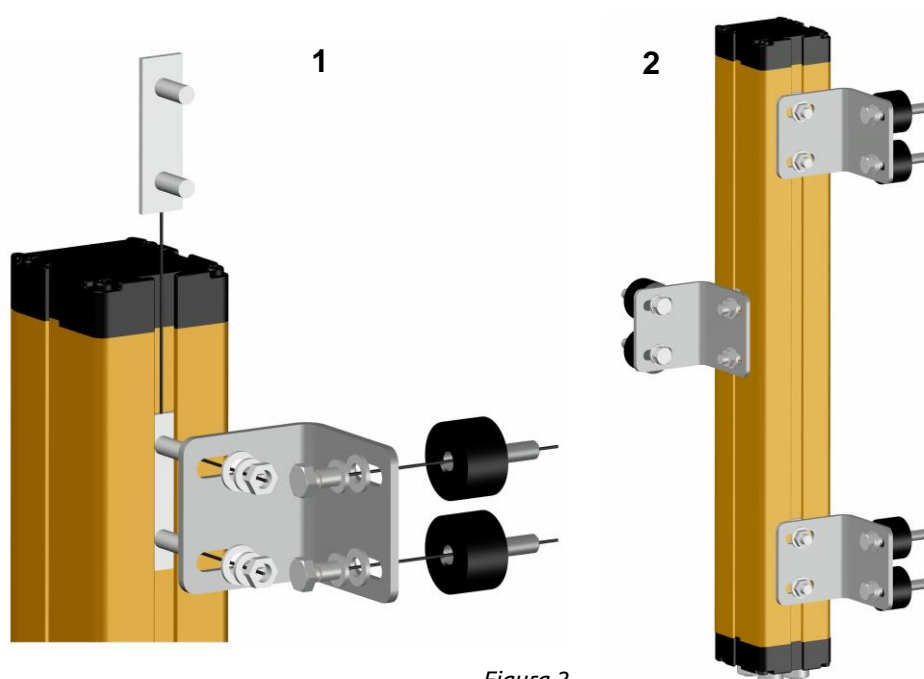


Figura 2

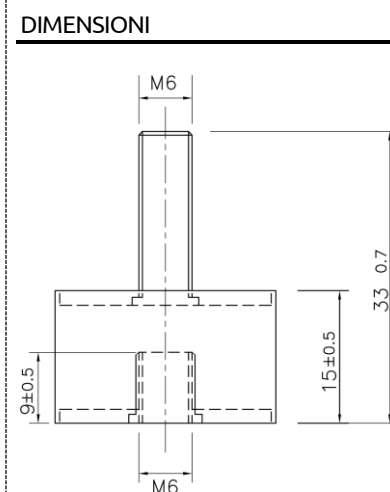


Figura 3



SAV-1 / SAV-2 vibration-damping support - application sheet

The purpose of this application sheet is to illustrate the correct use of vibration-damping supports used on barriers undergoing severe vibrations. The **SAV-1 / SAV-2** vibration-damping support must be mounted on the **JANUS / JANUS TRX / SAFEGATE / SAFEGATE TRX** series barriers by the customer.

The following table shows the vibration-damping set to use depending on the barrier model.

BARRIER HEIGHT	CODE	MODEL	NUMBER OF DAMPERS
150...1050mm	1200084	SAV-1 (2 dampers each bracket)	4
1200...1800mm	1200085	SAV-2 (2 dampers each bracket)	6

Table 1

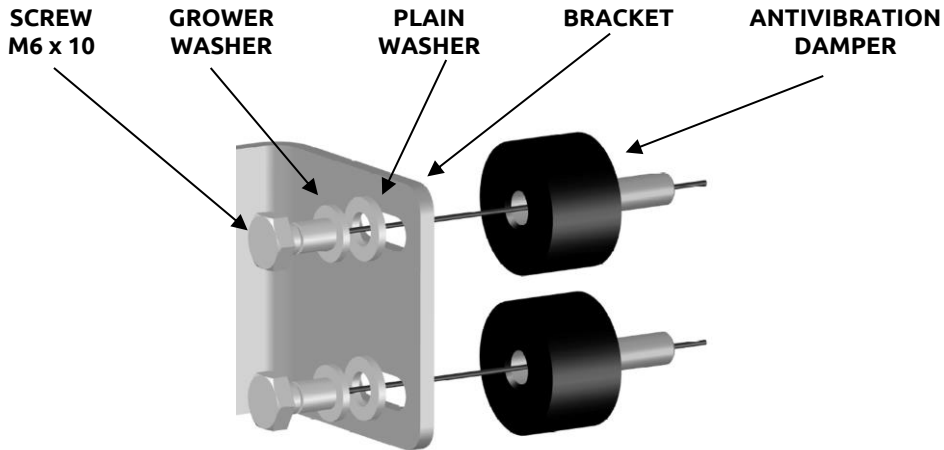


Figure 1

ASSEMBLY

- Secure the bracket to the hazardous machine by the anti-vibration damper using flat washer, grower washer and M6 x 10 screw (step 1, fig. 2). **(step 1, fig. 2).**
- Secure the barrier to the bracket with: insert, flat washer, grower washer and M6 nut **(step 1, fig. 2).**
- Tighten M6 nut **(step 1, fig. 2).**
- If the model installed exceeds 1050mm height, if possible fix 2 antivibration dampers on the rear side and 1 on one side of the barrier **(step 2, figure 2).**

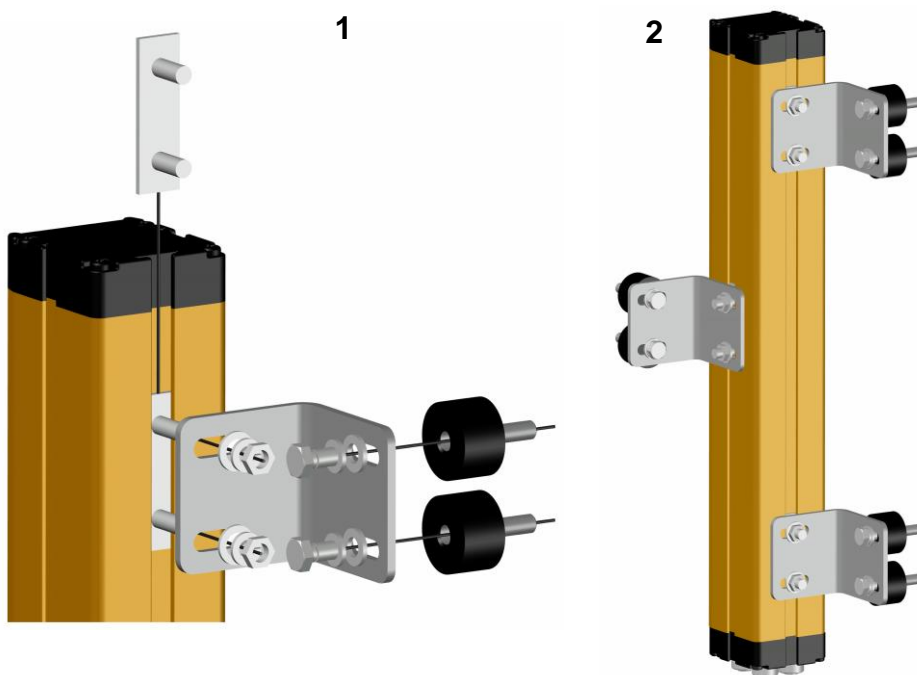


Figure 2

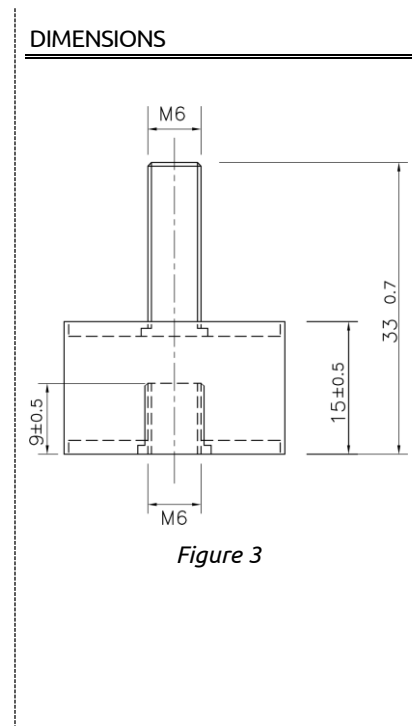


Figure 3


Supporti antivibranti SAV-3 / SAV-4 – foglio applicativo

Il presente foglio applicativo ha lo scopo di illustrare il corretto utilizzo dei supporti antivibranti utilizzati su barriere sottoposte a forti vibrazioni. Il set di supporti antivibranti SAV-3 / SAV-4, deve essere montato dal cliente sulle barriere della serie **ADMIRAL / VISION**.

La tabella seguente indica il set di supporti antivibrante da utilizzare a seconda del modello di barriera in uso.

ALTEZZA BARRIERA	CODICE SUPPORTO	MODELLO	QUANTITÀ SUPPORTI
150...1050mm	1200088	SAV-3 (1 antivibrante per staffa)	2
1200...1800mm	1200089	SAV-4 (1 antivibrante per staffa)	3

Tabella 2

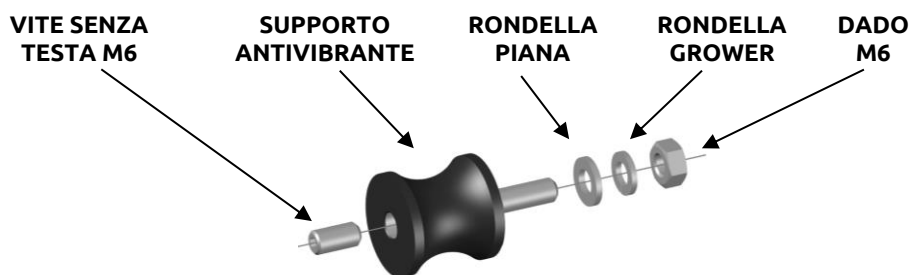


Figura 4

MONTAGGIO

- Avvitare la vite senza testa sul supporto antivibrante (**Figura 4**).
- Dopo aver fissato la staffa alla macchina pericolosa, assicurare il supporto alla barriera (sulla piastrina filettata) (**step 1, fig. 5**).
- Bloccare quindi la barriera sulla staffa con: rondella piana, rondella grower e dado M6 (**step 1, fig. 5**).
- Serrare il dado M6 (**step 1, fig. 5**).
- In caso di installazione di barriere di lunghezza superiore a 1050mm, fissare (se possibile) 2 supporti sul retro e il terzo su di un lato (**step 2, fig. 5**).

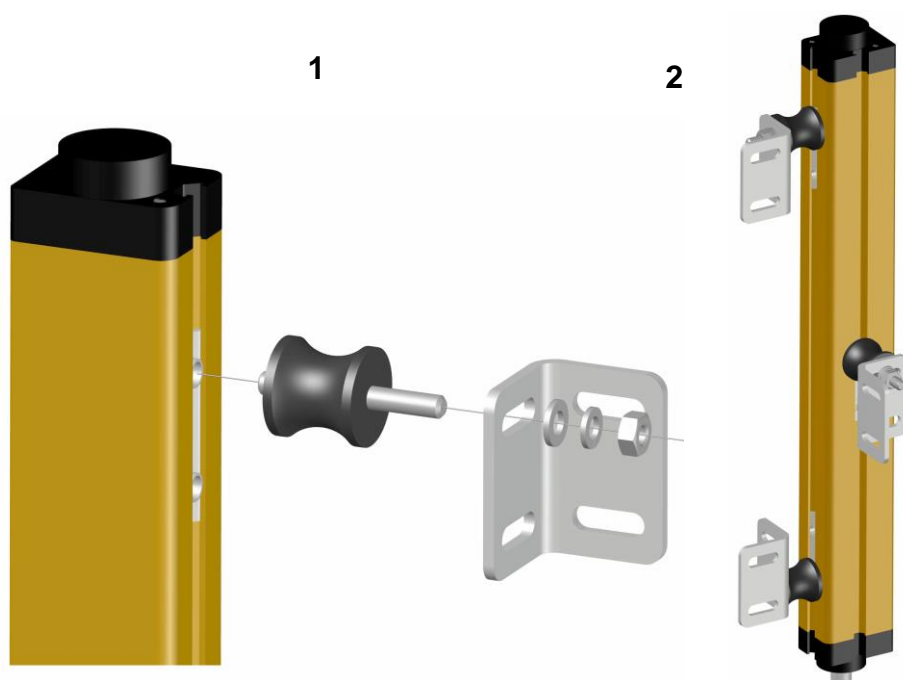


Figura 5

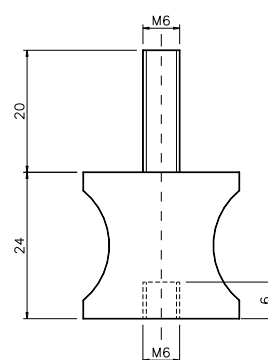
DIMENSIONI


Figura 6



SAV-3 / SAV-4 vibration-damping support - application sheet

The purpose of this application sheet is to illustrate the correct use of vibration-damping supports used on barriers undergoing severe vibrations.

The **SAV-3 / SAV-4** vibration-damping support must be mounted on the **ADMIRAL / VISION** series barriers by the customer. The following table shows the vibration-damping set to use depending on the barrier model.

BARRIER HEIGHT	CODE	MODEL	NUMBER OF DAMPERS
150...1050mm	1200088	SAV-3 (1 damper each bracket)	2
1200...1800mm	1200089	SAV-4 (1 damper each bracket)	3

Table 1

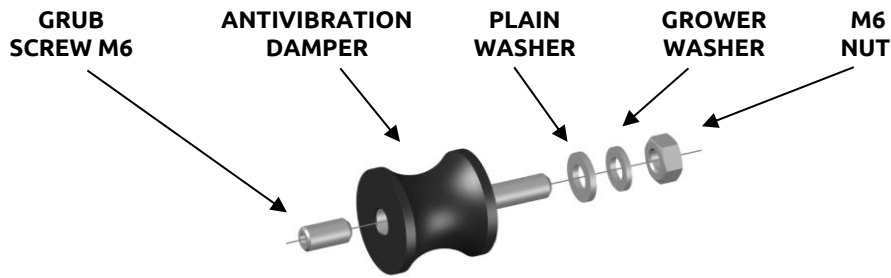


Figure 4

ASSEMBLY

- Screw up the grub screw on the antivibration damper (**Fig. 4**).
- After having fixed the bracket to the dangerous machine, screw up the antivibration damper to the barrier (on the threaded plate) (**step 1, fig. 5**).
- Fix the barrier on the bracket with: plain washer, grower washer and M6 nut (**step 1, fig. 5**).
- Tighten M6 nut (**step 1, fig. 5**).
- If the model installed exceeds 1050mm height, if possible fix 2 antivibration dampers on the rear side and 1 on one side of the barrier (**step 2, figure 5**).

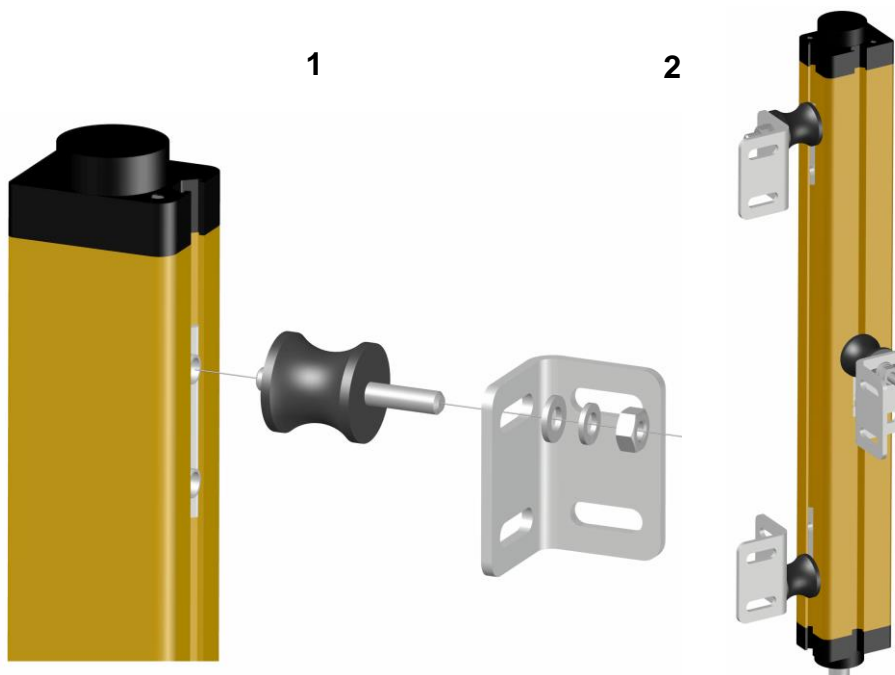


Figure 5

DIMENSIONS

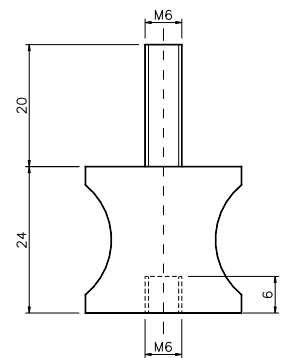


Figure 6



Supporti antivibranti SAV 8E / SAV 12E – foglio applicativo

Il presente foglio applicativo ha lo scopo di illustrare il corretto utilizzo dei supporti antivibranti utilizzati su barriere della serie **EOS** sottoposte a forti vibrazioni. La tabella seguente indica il set di supporti antivibranti da utilizzare a seconda del modello di barriera in uso.

ALTEZZA BARRIERA	CODICE	MODELLO	QUANTITÀ SUPPORTI
150	1310973	SAV 8E (2 antivibranti per perno)	8
250...1800	1310974	SAV 12E (2 antivibranti per perno)	12

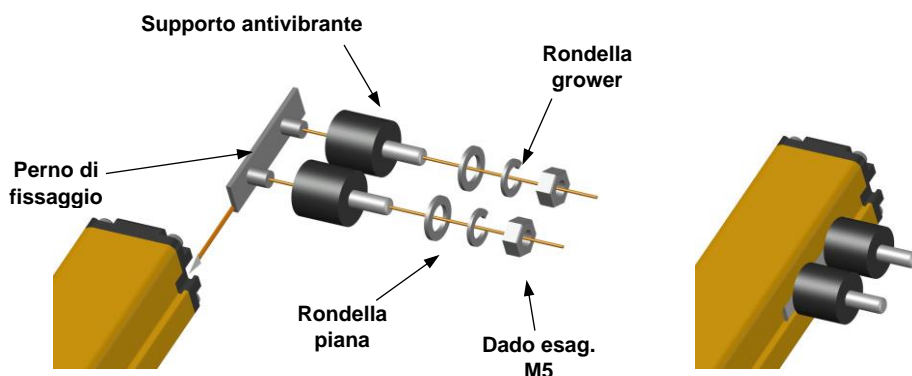
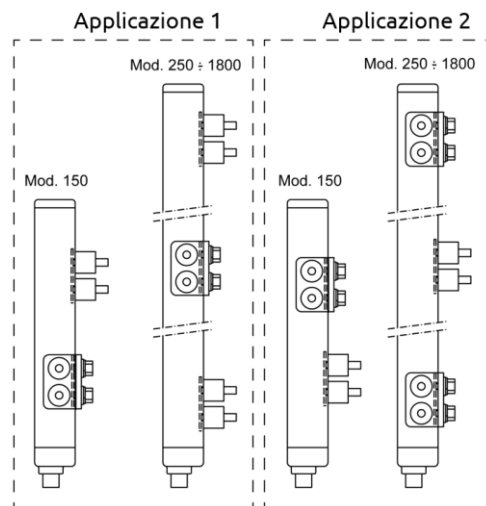


Figura 7

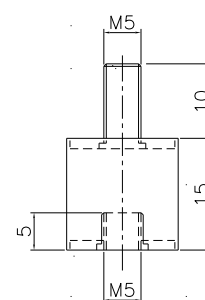
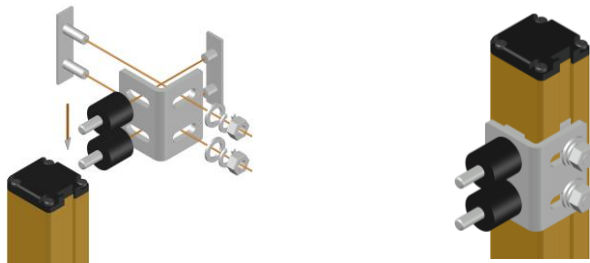


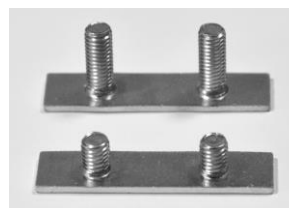
Figura 8 - Dimensioni

MONTAGGIO

FISSAGGIO LATERALE CON UNA STAFFA



PERNI DI FISSAGGIO



Perni di fissaggio da 12mm
(forniti con la barriera)

Perni di fissaggio da 4mm
(forniti con gli antivibranti)

SOLUZIONE PER LA RIDUZIONE DELLE VIBRAZIONI SU DUE ASSI

Esempio 1:

Esempio 2:





SAV 8E / SAV 12E vibration-damping supports - application sheet

The purpose of this application sheet is to illustrate the correct use of vibration-damping supports used on EOS series barriers undergoing severe vibrations. The following table shows the vibration-damping set to use depending on the barrier model.

BARRIER HEIGHT	CODE	MODEL	NUMBER OF DAMPERS
150	1310973	SAV 8E (2 dampers for insert)	8
250...1800	1310974	SAV 12E (2 dampers for insert)	12

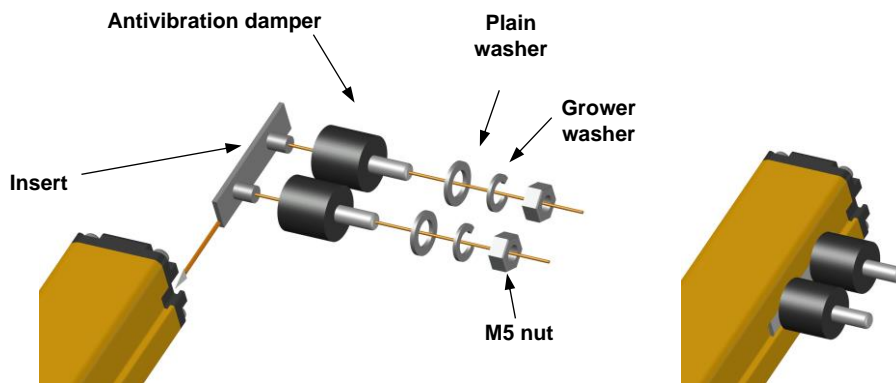


Figure 7

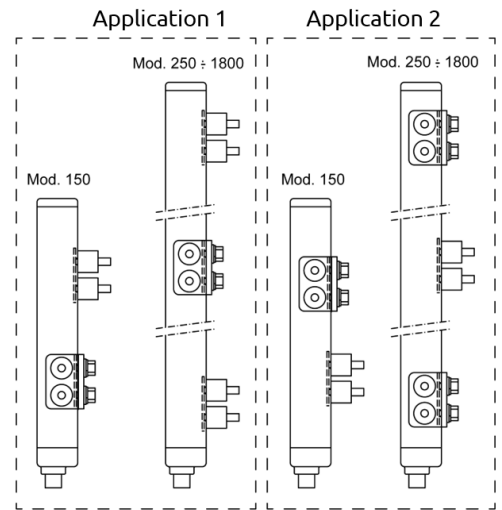
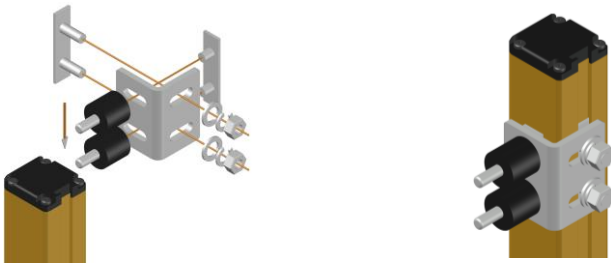


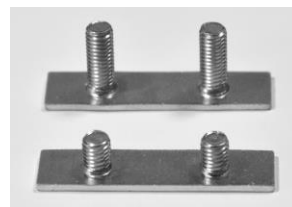
Figure 8 - Dimensions

ASSEMBLY

SIDE ASSEMBLY WITH BRACKET



INSERTS



12mm inserts
(supplied with barrier)

4mm inserts
(supplied with dampers)

SOLUTION FOR TWO AXIS VIBRATION REDUCTION

Example 1:



Example 2:

